

georgia row  
AT WALTER REED

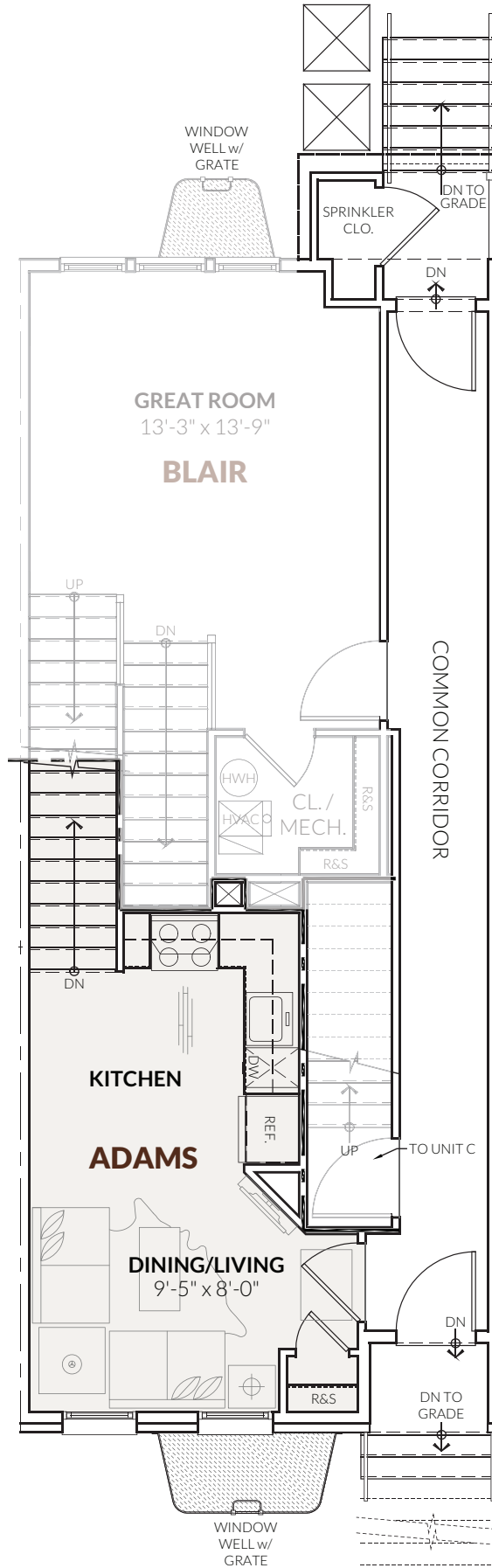
## THE ADAMS

1 BEDROOM W/DEN OR 2 BEDROOMS | 1 BATH



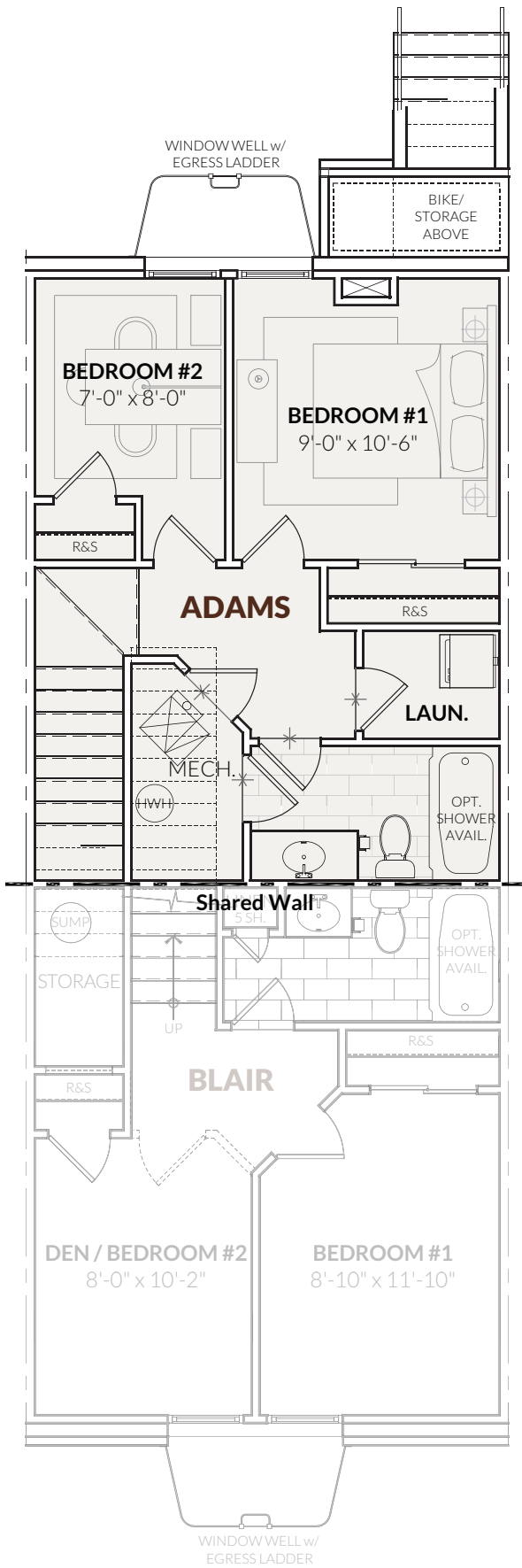
CRAFTMARK HOMES

LUXURY URBAN RESIDENCES

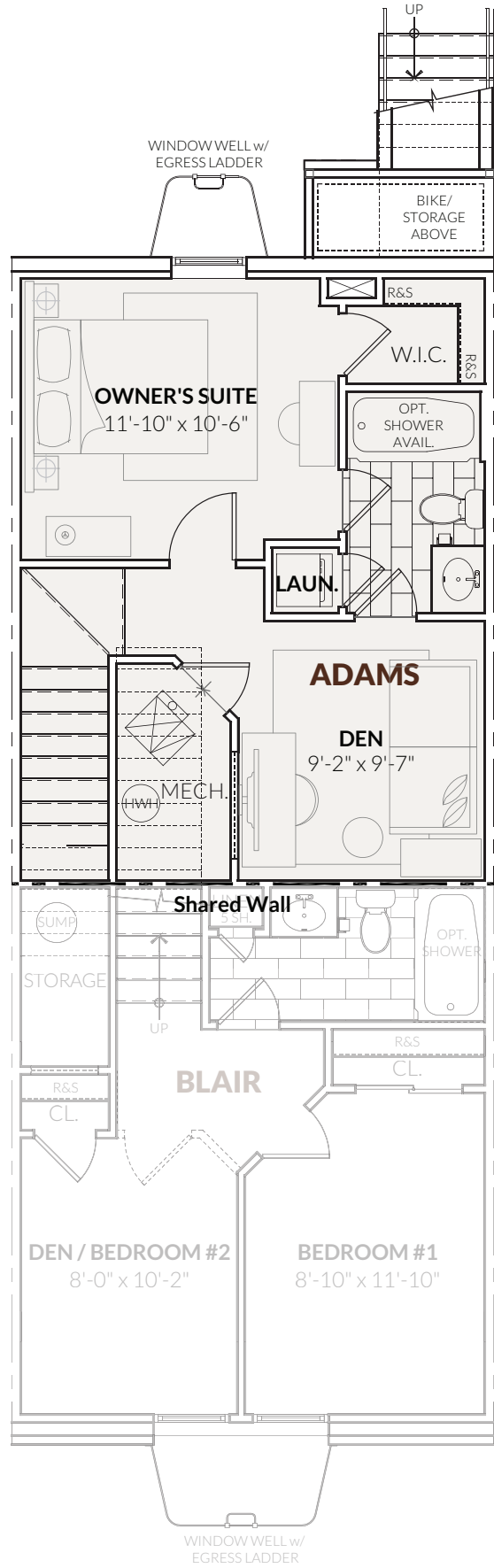


**ENTRY LEVEL**

All artist's renderings are concepts, may show optional features and are subject to change without notice. Ask Sales Manager for details.  
 All floor plans and elevations are approximate and subject to change without notice. Room sizes and window configurations may vary with elevation.  
 All dimensions noted represent widest point of room. Doors are not to scale and do not reflect actual door sizes.



**LOWER LEVEL**



**ALTERNATE LOWER LEVEL**

All artist's renderings are concepts, may show optional features and are subject to change without notice. Ask Sales Manager for details.  
 All floor plans and elevations are approximate and subject to change without notice. Room sizes and window configurations may vary with elevation.  
 All dimensions noted represent widest point of room. Doors are not to scale and do not reflect actual door sizes.



### BUILDING CROSS SECTION

Note: Shaded area represents finished living area of The Adams.



[CRAFTMARKHOMES.COM/GEORGIAROW](http://CRAFTMARKHOMES.COM/GEORGIAROW)



All artist's renderings are concepts, may show optional features and are subject to change without notice. Ask Sales Manager for details. All floor plans and elevations are approximate and subject to change without notice. Room sizes and window configurations may vary with elevation. All dimensions noted represent widest point of room. Doors are not to scale and do not reflect actual door sizes.